

HUNTERS®

HERE TO GET *you* THERE



Brenthouse Road

London, E9 6QE

£2,300 Per Month



Located in the heart of Homerton, this well-proportioned split-level flat offers bright and spacious accommodation.

The property boasts two generously sized double bedrooms, both offering ample space for furnishings and storage. The large living room provides a comfortable space to relax or entertain, while the separate kitchen comes fully fitted with modern appliances and plenty of worktop and cupboard space — ideal for those who enjoy cooking at home.

The flat also benefits from a fully tiled bathroom with a clean, contemporary finish, and the split-level layout gives the home a more private and homely feel.

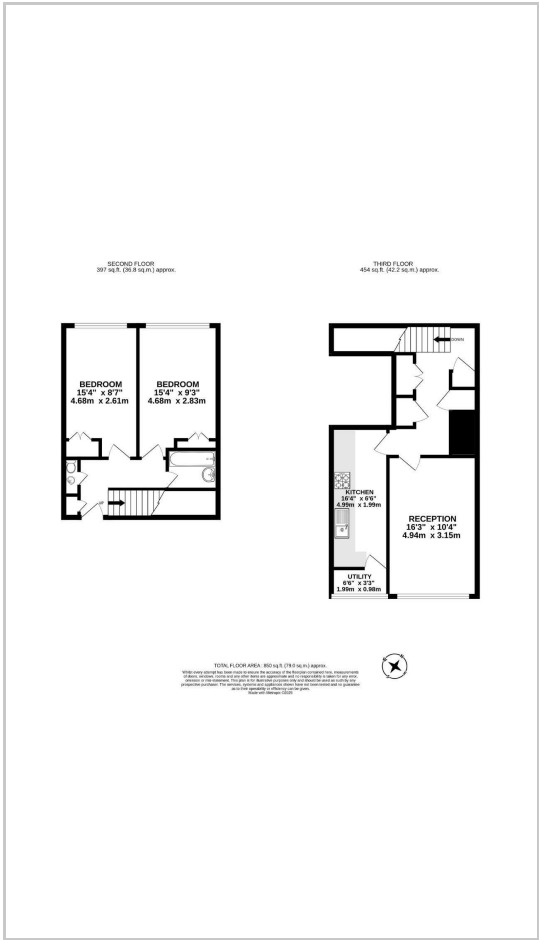
Situated within easy reach of Homerton Overground Station and local bus routes, the flat offers excellent connectivity to the City, Stratford, and surrounding areas. Nearby, you'll also find a great selection of local amenities, green spaces, and popular spots such as Victoria Park and Hackney Wick.



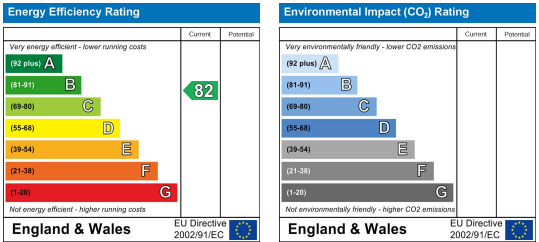
Area Map



Floor Plans



Energy Efficiency Graph



These particulars are intended to give a fair and reliable description of the property but no responsibility for any inaccuracy or error can be accepted and do not constitute an offer or contract. We have not tested any services or appliances (including central heating if fitted) referred to in these particulars and the purchasers are advised to satisfy themselves as to the working order and condition. If a property is unoccupied at any time there may be reconnection charges for any switched off/disconnected or drained services or appliances - All measurements are approximate. **THINKING OF SELLING?** If you are thinking of selling your home or just curious to discover the value of your property, Hunters would be pleased to provide free, no obligation sales and marketing advice. Even if your home is outside the area covered by our local offices we can arrange a Market Appraisal through our national network of Hunters estate agents.